



NOVEMBER 12TH, 2025, AT 10:00 AM

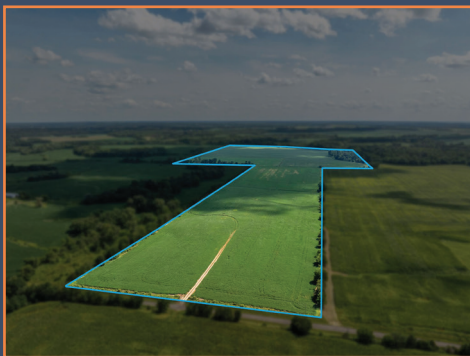


QUEEN OF PEACE PARISH HALL | EWING, MO

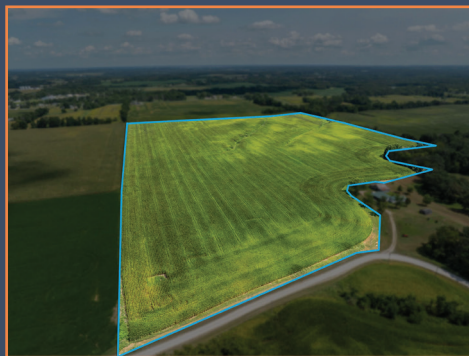
No Reserve Absolute Auction
LEWIS COUNTY
Offered in Three Tracts

212 ACRES M/L

Tract 1



Tract 2



Tract 3



Peoples Company is pleased to present this attractive three-tract land auction in Lewis County, Missouri. These tracts offer an excellent opportunity for farmers, investors, and rural lifestyle buyers alike. With a mix of highly tillable row-crop acres, blacktop and county road access, rural water availability, and a potential homesite with recreational appeal, this auction provides something for everyone. Don't miss the chance to purchase quality land in a strong farming community with close proximity to area grain terminals.

Kurt Hollenberg | 573.220.6155
Kurt.Hollenberg@PeoplesCompany.com
MO LIC 1999101983

Listing #18565

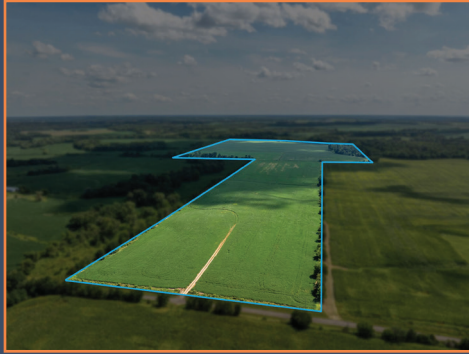




NOVEMBER 12TH, 2025, AT 10:00 AM

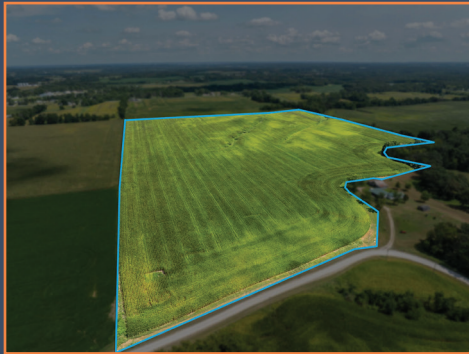


QUEEN OF PEACE PARISH HALL | EWING, MO



Tract 1 | 150 Acres M/L

Tract 1 consists of productive row-crop farmland in northeast Missouri, boasting approximately 90% tillable acres. The property features blacktop frontage with gently rolling terrain, offering ease of access and efficient farming practices. Situated in a strong agricultural community and within a short drive of grain terminals, this tract is an excellent option for operators and investors looking to add high-quality cropland to their portfolio.



Tract 2 | 53 Acres M/L

Tract 1 consists of productive row-crop farmland in northeast Missouri, boasting approximately 90% tillable acres. The property features blacktop frontage with gently rolling terrain, offering ease of access and efficient farming practices. Situated in a strong agricultural community and within a short drive of grain terminals, this tract is an excellent option for operators and investors looking to add high-quality cropland to their portfolio.



Tract 3 | 8 Acres M/L

Tract 1 consists of productive row-crop farmland in northeast Missouri, boasting approximately 90% tillable acres. The property features blacktop frontage with gently rolling terrain, offering ease of access and efficient farming practices. Situated in a strong agricultural community and within a short drive of grain terminals, this tract is an excellent option for operators and investors looking to add high-quality cropland to their portfolio.

Kurt Hollenberg | 573.220.6155
Kurt.Hollenberg@PeoplesCompany.com
MO LIC 1999101983



All information, regardless of source, is deemed reliable but not guaranteed and should be independently verified. The information may not be used for any purpose other than to identify and analyze properties and services. The data contained herein is copyrighted by Peoples Company and is protected by all applicable copyright laws. Any dissemination of this information is in violation of copyright laws and is strictly prohibited.